

A project by



Reside with nature's
Tender touch!

3 BHK Super
Luxury Apartments
@ BENZ Circle,
Vijayawada

Builders & Developers



Arcedo Infra, # 52-1-2, 1st Floor, Om Sri Sai Complex,
Veterinary Colony, Vijayawada - 520 001. A.P.

Contact us : +91 9848691799, 9949 352 452, 7382 11 77 55,
Website: www.arcedo.in, E-mail: info@arcedo.in.

Site Address:

JHANSI RESIDENCY

Plot No: 7&8, Munciple Employees Colony, Polyclinic Road, Benz Circle, Vijayawada.

Consultants:

AKRUTHI CONSULTANTS

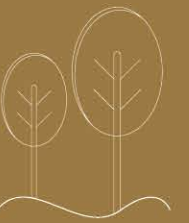
Architects, Engineers & Interior Designers
G-3, B-Block, Venkata Ramana Apts, AC Guards,
Masab Tank, Hyd. Ph: 9949949955, 040 - 40071888.

Structural Engineers:

AMRUTHA SAI ASSOCIATES
Road No. 1, New Postal Colony,
Patamata, Vijayawada, AP.

NOTE : This brochure is only a conceptual presentation of the project and not a legal offering.
The promoters reserve the right to make changes in plans, specifications and elevation, as deemed fit.

A project by

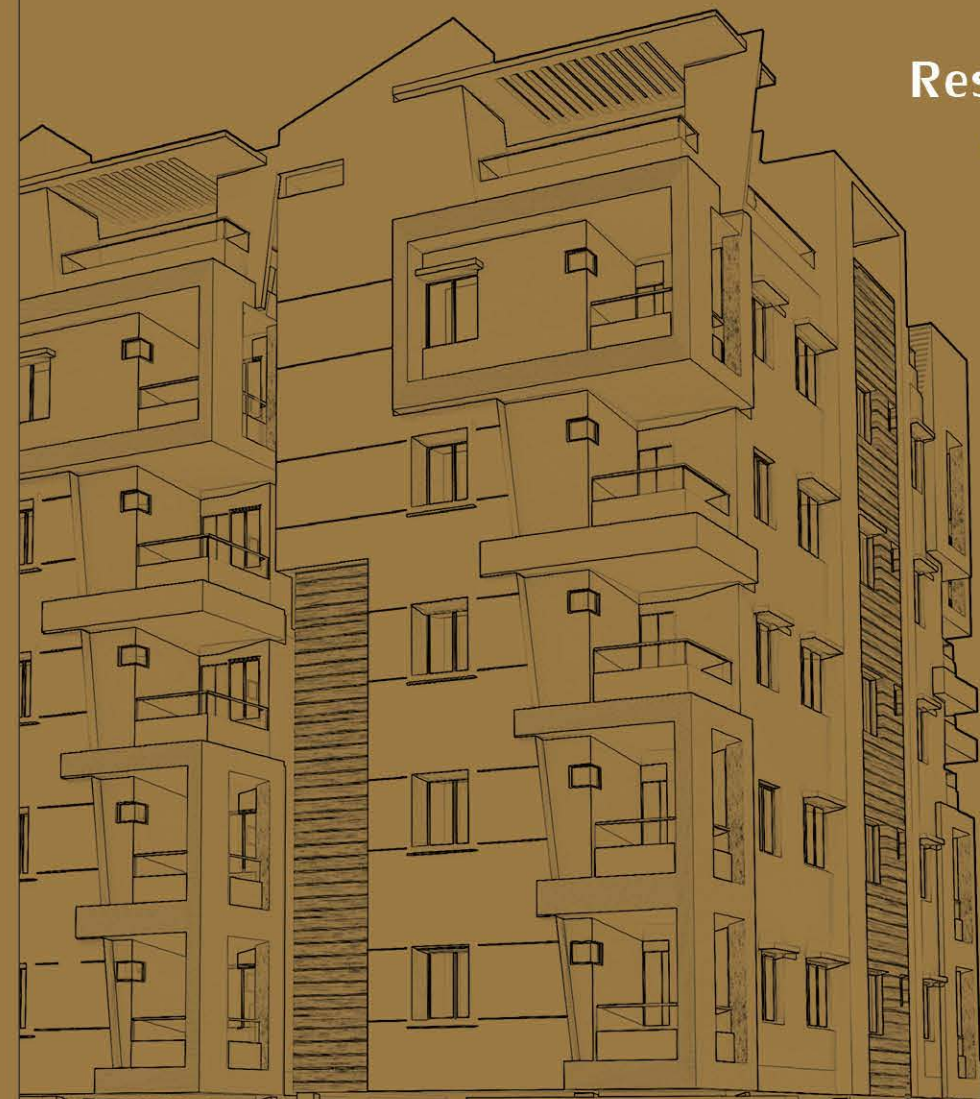


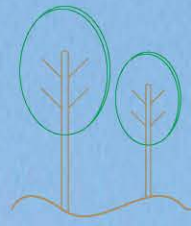
Jhansi *Residency*

Reside with nature's
Tender touch!

3 BHK Super
Luxury Apartments
@ BENZ Circle,
Vijayawada

Concept by **kreaz** +91 9989 11 99 00





YOUR MOMENT
Has arrived.

The uncertainties of life put us through a mix of several moments. Some of them we are delighted by, some of them we welcome with a warm heart, some others we desperately await, some of them fulfill our dreams, some others happen once-in-a-lifetime. But the best ones are those that we never expected. Jhansi Residency is your gateway to those moments.


Jhansi
Residency



TYPICAL FLOOR PLAN

Area Statement

Flat No	1	2
BHK	3 BHK	3 BHK
Areas	2060 Sft.	2060 Sft.



40' WIDE ROAD

Jhansi Residency



Leave your
Impressive mark

Your home should always make you feel happy and should eternally remain a place you long to come back to. Jhansi Residency, undoubtedly, will grow into one such place, and you will experience that for yourself. So whether you're coming back from a long holiday or from work after a along tiring day, the very thought of coming back to your most treasured destination called home, should rejuvenate you. And here, you will experience that.

SPECIFICATIONS

STRUCTURE

RCC framed structure.

WALLS

External Walls with 9" thick and internal walls with 4.5" thick with red bricks.

FLOORING

Double charged vitrified tiles of 80cm x 80cm in Hall, Dining, Kitchen areas and 60cm x 60cm in bed rooms.

WATER PROOFING

Water-proofing cement plaster over a coat of brush bonds for lift pits, toilets, wash areas, water tanks and terrace.

MAIN DOOR

Aesthetically designed Teak Wood frame with Teak Wood shutter.

OTHER DOORS

Teak Wood frames with designed flush doors.

WINDOWS

Premium make UPVC windows with 4MM plain thick glass including mesh track provision with safety grills.

KITCHEN

Granite top on kitchen platform and stainless steel sink and upto 2 feet height glazed tiles dadoo. Utility: Glazed ceramic tile dado up to 3' height with washing machine provision.

TOILETS

Sanitary: Toilets with EWC of Parryware / Hindware. CP Fittings : Parryware / Hindware / Plumber make and glazed tiles dado up to door height. Provision for exhaust fan and geyser.

PLUMBING

Concealed CPVC piping (Ashirwad/Supreme/Astral make) for water lines and PVC piping (Ashirwad / Prince / Supreme make) for sewerage lines.

ELECTRICALS

Concealed copper wiring of Finolex make with adequate power plugs, fan, light points, TV & telephone points of Legrand / GM Modular Switches with metal box. Split AC provision in all bedrooms. Mixer / grinder / oven / water purifier points in kitchen.

LIFTS

6 passenger lift of standard Johnson make or equivalent.

INTERCOM

Intercom facility for all internal flats connected with security cabin.

GENERATOR

Soundproof Generator (Ashok layland/Escorts/Eicher make) for power back up of all common area lighting, Lifts and 2/3 light and fan points in each flat.

NOTE

a) If any extra work (ex: shelves/lofts) to be done in the flat should be borne by the purchaser only.

b) Registration, GST or any other taxes levied by the state/central Govt at the time of registration have to be borne by the purchaser only.

PLASTERING

External walls with double coat sponge finish. Internal walls smoothly plastered with lime rendering. Iron jolly work for the joints between brick work and RCC.

PAINTING

Asian Royal Emulsion / Berger / Nippon Paints Over two coats of Birla/JK/MYK Laticrete cement based putty finish for internal walls. Birla / JK Weather proof putty on elevation side and corridors and staircase. Asian Ace/ Apex paints/ Nippon or Berger weather proof paints for external walls. Texture/cladding at selected places as per elevation. Asian melamine spray polish for main door and two coats of Asian enamel paints for internal doors and window grills.

VAASTU

100% vaastu complaint and ample ventilation.



Live a life of
Fantasy tales



PROXIMITY

- Benz Circle - 1.0km
- Inox Cinemas - 1.2km
- MC Donald's - 1.5km
- Railway Station - 4.0km
- Bus Station - 4.5 km
- Close to Banks, Schools, Colleges, Malls and Hospitals.

Amenities & Features

- No Common Walls
- Power Backup Generators
- 24-hr Security with Intercom Facility
- Excellent landscaping
- Solar Fencing
- Rainwater harvesting
- Children's Play Area
- Automated Lifts
- Vaastu compliant
- CCTV Cameras



Jhansi
Residency



Tiny tales at
every corner.

